

## Diving Operation Description

### Operation

The dive centre opens at 8:00

The clients should arrive at 8:05.

For all the clients that are in hotels at Santa Maria area, we may do the transfer to and from the diving centre.

When the divers arrive to the dive centre they start to put the aqualungs together (regulator, cylinder and bcd), placing all the accessories (fins, masks, etc) in a separated box available for their transport.

The equipment's will be transported to the boats by our team.

The divers, still in the dive centre, start to dress their diving suits and attend to the two dives morning briefing.

They will be conducted to the pier or beach, place where they will board. We will do two dives with the necessary surface interval.

The return to the diving centre, depending on the duration of the dives and their distance, will happen between the 12:00 and 14:00 (that includes the possibility of going to the NW coast of the island to do the caves).

During the afternoon period, at 14:30, we do also a trip with one or two tanks (depending on the period of the year) and other one as a night dive. The night dive starts in different times, depending on the period of the year.

We also do Dawn dives. Those have a meeting point at 4:30, in the dive centre.

### Currents

Due to the unpredictability of the currents, dives may be changed when arriving over the site.

### Torches

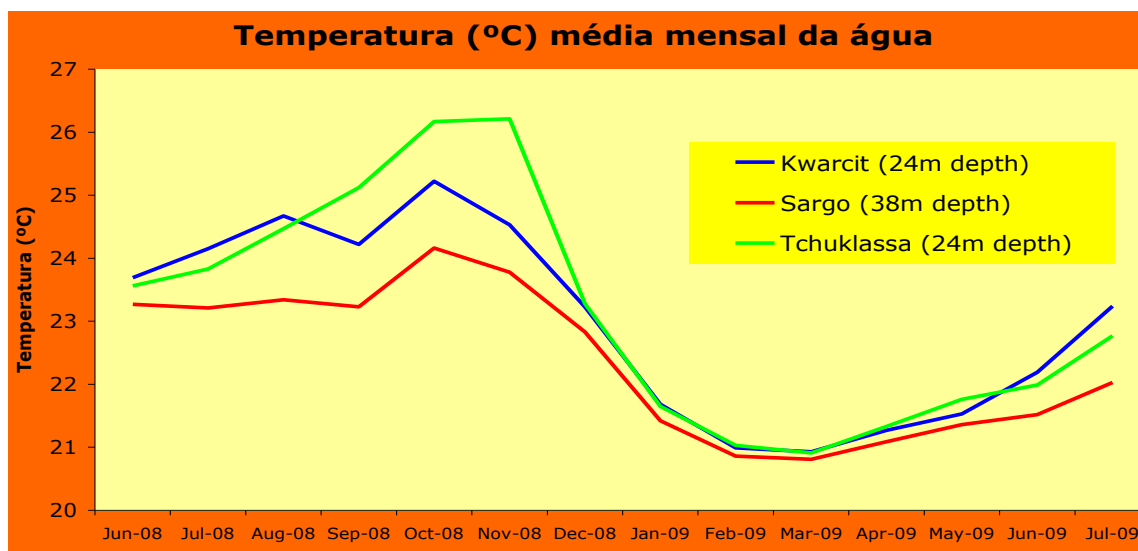
We advise divers to bring their own torch. They will be needed not only for the night, dawn or cave dives but also for the dives during the day; a enormous amount of small and medium size rock cavities are full of life. If a diver does not possess such equipment, it can be rented at the **Manta Diving Center**.

### Instruments

For safety reasons, it is compulsory the use of diving computers. If the diver does not have such equipment, it can be rented at the dive centre.

## Thermal protection

The average temperatures, at the considerate depths, change as following:



Note: The presented data was given by the electronic probes placed by the **Manta Diving Center** as a part of the Artificial Reef Project we do have with the Cape Verdian Government.

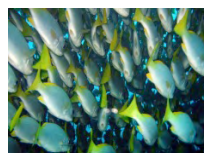
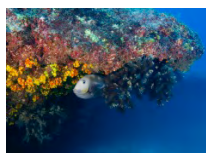
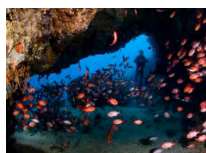
The thermal protection not only has to be related to the shown temperatures but also having in your mind the possibility of the thermoclines phenomena. Because of such phenomena, the temperatures can drop 1 to 4°C (sometimes more if we dive deeper).

If the guest does not have a diving suit, he can rent one of ours with a thickness off 6,5mm.

Divers may use gloves but it is forbidden to touch the corals.

## Extras

To the long distance dives (by boat or boat and car), the night dives and the dawn dives will be added a fixed extra charge. That payment is done directly to **Manta Diving Center**.



## Try Dive, Try Scuba Dive

The try dive is a half-day activity for those that never tried scuba diving before.

Guests arrive to our dive centre at 8:20 or 13:20. We can organize the pickup from the hotel where they are staying.

They need to fill in an inscription form and a medical questionnaire. If everything ok, we will start to choose the diving equipment they are going to use.

The next step is to start a small theory lesson where they will learn what they are allowed to do or what they cannot do.

During the pool lesson some exercises will be practiced to make the candidates confident and comfortable with all the gear.

The final step is to do a dive in the sea to allow the students to see some thousands of fishes and, who knows, a turtle.

If they wish to go on in diving, we can lead them from the Try Scuba Dive to the Scuba Dive or Open Water Diver course.



## Diving Courses

The candidates to a dive course may choose between **SSI**, BS-AC and a PADI course. Being **Manta Diving Center** a **SSI** diving school, our instructors are prepared to give all type of courses according to **SSI** teaching standards.

The initial diving courses are two; The Scuba Diver and the Open Water Diver.



### Scuba Diver

The Scuba Diver course as a approximated duration of two days including the theory, pool or confined water lessons and two dives in the sea.

At the end, divers will be able to dive within the 12m-depth limit, without compulsory decompression stops and using breathing air. They need to dive with an instructor or another dive professional.

The Scuba Diver's are certified according the ISO 24801-1 Non Autonomous Diver.  
The Scuba Diver course includes, during the lessons, the use of all diving gear.

### Open Water Diver

The Open Water Diver course as a approximated duration of three days including the theory, pool or confined water lessons and four dives in the sea.

At the end, divers will be able to dive within the 18m-depth limit, without compulsory decompression stops and using breathing air. The can dive with another diver with the same qualification or above.

The Open Water Diver is certified according the ISO 24801-2 Autonomous Diver.  
The Open Water Diver course includes, during the lessons, the use of all diving gear.

## Continuous Training – SSI Diving Specialties

The certified divers can, apart of doing dives, increase their knowledge and diving skills doing **SSI Specialty Courses**.



At **Manta Diving Center** among other diving specialties, you can find:

- Nitrox
- Perfect Buoyancy
- Navigation
- Night & Limited Visibility
- Deep Diving
- Wreck Diving
- React Right
- Diver Stress & Rescue
- Photo & Video
- Equipment Techniques
- Free Diving

Among others...

## Start your course on-line!

Start your on-line training and finish the theory at home. As that you will use your precious holiday time only for the best part **diving!**

Go to [www.divessi.com](http://www.divessi.com), and register yourself. Do not forget to choose **Manta Diving Center** in Cape Verde as the place to complete your diving course.

Download the App and start your study on your smartphone, tablet or dive computer.

The App is available to:



**#REALDIVING**



ENTER THE DIGITAL  
**REVOLUTION.**  
LOGIN AND LEARN.



DIVESSI.COM

Study whenever and wherever in most languages  
Learning is exciting with videos and animations  
Test your knowledge with interactive questions  
Add notes for discussion with your instructor  
Track your progress every time you login

**SSI** SCUBA  
SCHOOLS  
INTERNATIONAL  
DIGITAL LEARNING. **REAL DIVING.**



## Dive Pro with SSI

If you love to dive, communicate with other persons and you love nature then you should start your DIVE PRO carrier!

Speak to us. We will design and manage your best training schedule.

## BECOME AN **SSI INSTRUCTOR** AND LIVE YOUR DREAM!



### YOUR OFFICE



### YOUR MEETING



### YOUR BUSINESS DINNER

GET YOUR INSTRUCTOR  
KIT FOR FREE!  
SCAN HERE FOR MORE DETAILS:



**SSI** SCUBA  
SCHOOLS  
INTERNATIONAL